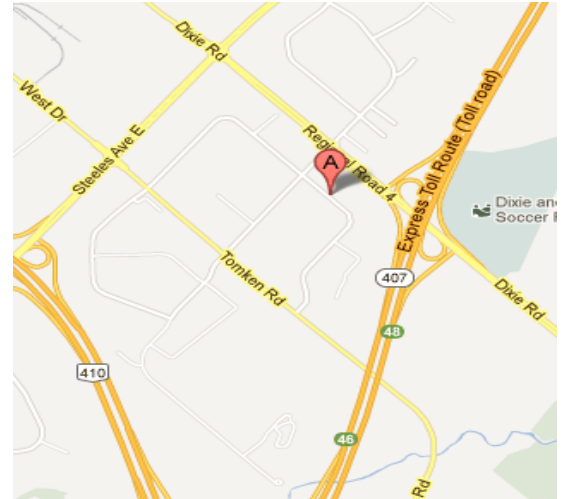


# P R O M B A N K

5080 Timberlea Blvd., Suite 201 Mississauga, ON L4W 4M2  
T: 905-625-2171 F: 905-625-8445 E: info@prombankgroup.com  
Website: www.prombankgroup.com

BRAMPTON OFFICE/INDUSTRIAL

215 Advance Blvd. Unit 3

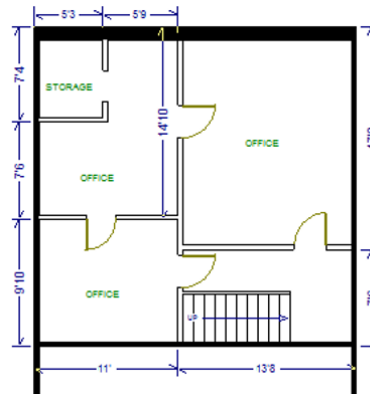


**2,500 Square Feet**

**First Year Net Rental Rate:** *Call to inquire*  
**Additional Rent:** *Call to inquire*

## PROPERTY FEATURES

- Available Immediately
- Abundant Parking
- 25% A/C Office Space
- Fully Sprinklered
- Street Exposure
- D/I Shipping
- 500 Sq. Ft. Mezzanine



MEZZANINE

